

NEIGHBOURHOOD LIAISON MEETING



1 MAYFAIR

LONDON

TUESDAY 22 NOVEMBER 2022

UNIVERSITY OF WOMENS CLUB



Our proposed agenda for this evening:

1. Welcome / Housekeeping
2. Branding Update
3. Team Introductions
4. Operational Update & Project Overview
5. Project Timeline for the next 12 months
6. Upcoming Activities
7. BPM and Project Innovations
8. Logistics & Traffic Management Update
9. Caudwell Children's Charity



BRANDING UPDATE PLACEHOLDER SLIDE



1 MAYFAIR

LONDON

Meet the Mace Team



Liam Florey
Project Director



Peter Walsh OBE
Communications Lead



Dean Emblin
Construction Lead



Stuart Laycock
Operations Director



Lisa Byron
Commercial Lead



Tim Heywood
Facade Lead



Josh Poole
Interior Works Lead



1 MAYFAIR

LONDON



1 MAYFAIR
LONDON

Operational Information

Standard Site Working Hours:

Monday to Friday: 08:00hrs – 18:00hrs
Saturdays: 08:00hrs – 13:00hrs – (There will be quieter works taking place on Saturday)
Sundays: No works

In exceptional circumstances it may be necessary to work outside these hours (for example tower crane dismantling). In such instances we will ensure approval is granted by Westminster City Council and timely notifications are sent to residents.

Any construction queries or concerns to be directed to our Communications Lead, Peter Walsh, he is available on a 24/7 basis on 07767 858638, or by email at peter.walsh@macegroup.com

Christmas/New Year 2022/23 Arrangements:

The project ceases construction activities on Friday 23 December 2022 and restarts on Monday 2 January 2023





1 MAYFAIR
LONDON

Project Overview





1 MAYFAIR

LONDON

Project Timeline (next 12 months)

2023

Q1

Q2

Q3

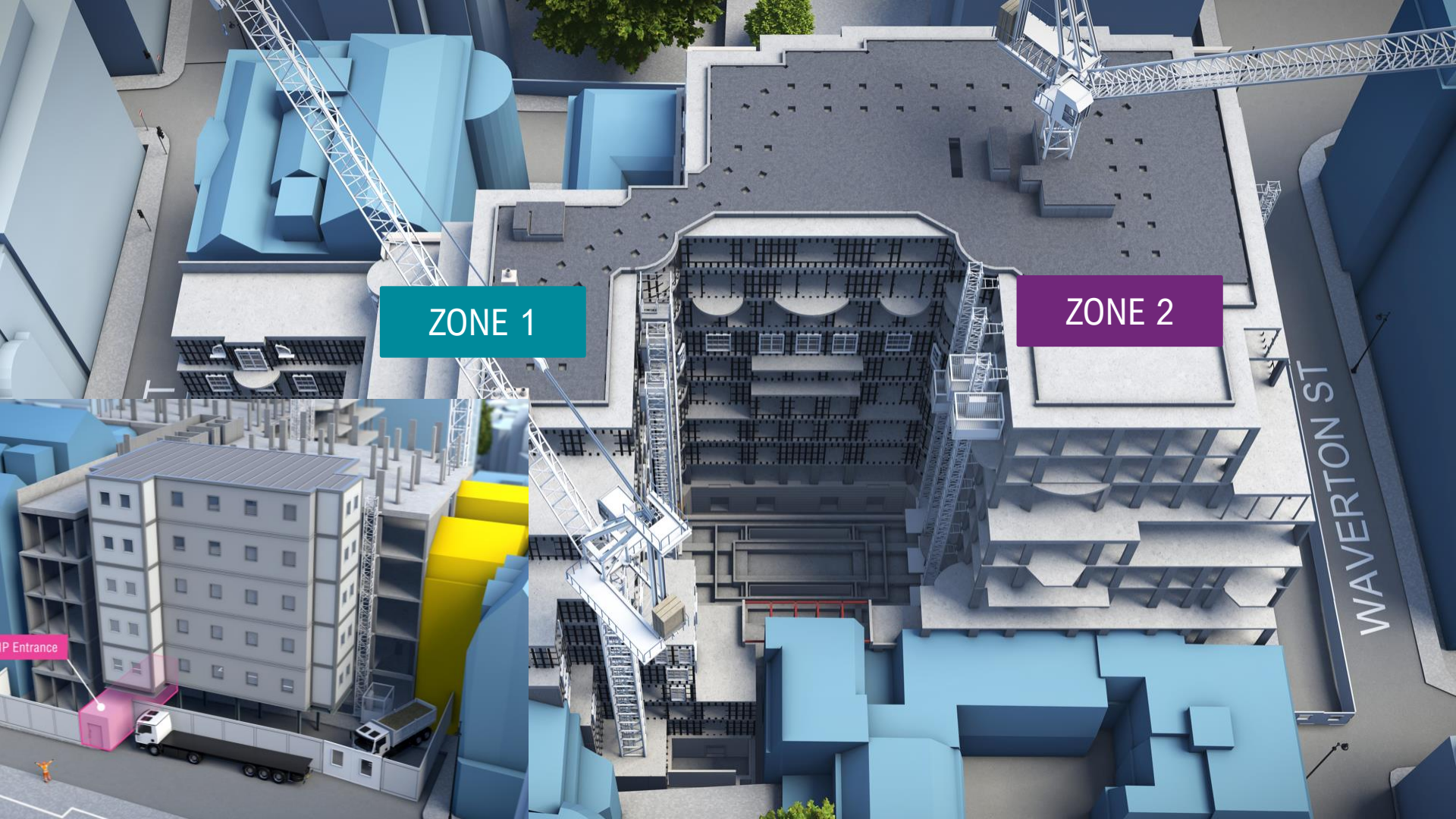
Q4

- Zone 2 Main jump form core commences
- Screed, Waterproofing and Scaffold Works Commence South Audley Street
- Commencement of Façade System Installation
- Level 5 Zone 1 handed over

- Installation of first windows to Zone 1
- Zone 1 superstructure complete
- Zone 1 top down substructure complete
- Zone 2 basement substructure ongoing
- Mechanical & Electrical plant deliveries commenced

- Zone 1 façade stonework ongoing
- Internal blockwork commenced
- Zone 2 substructure complete
- UKPN HV substation completed and live
- Apartment Fit-Out commenced

- Zone 2 superstructure complete
- Zone 2 scaffolding commenced
- Zone 2 façade and windows started
- Mechanical & Electrical packages ongoing
- Swimming pool formation ongoing



ZONE 1

ZONE 2

IP Entrance

WAVERTON ST



1 MAYFAIR

LONDON



ZONE 1 BASEMENT WATERPROOFING



ZONE 1 BASEMENT BLOCKWORK



1 MAYFAIR

LONDON



ZONE 1 LEVEL 2 SUPERSTRUCTURE



ZONE 1 LEVEL 2 SUPERSTRUCTURE VERTICALS



1 MAYFAIR

LONDON



ZONE 2 LEVEL 2 BASEMENT SUBSTRUCTURE



ZONE 2 LEVEL 2 BASEMENT DRAINAGE

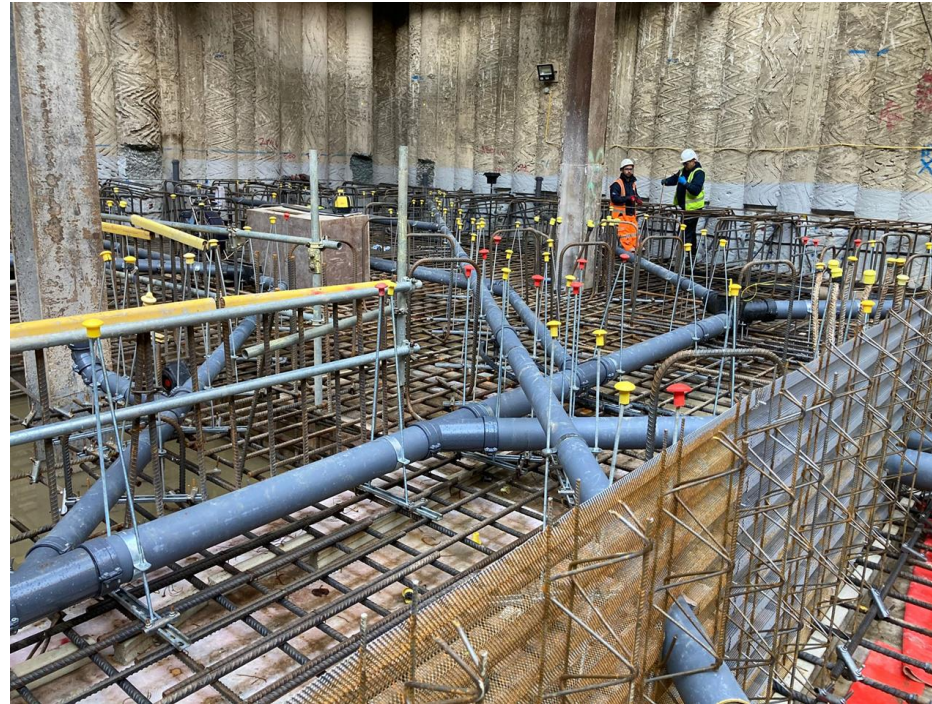


1 MAYFAIR

LONDON



ZONE 2 LEVEL 2 BASEMENT SUBSTRUCTURE



ZONE 2 LEVEL 2 BASEMENT DRAINAGE

Logistics Overview





1 MAYFAIR

LONDON



Best Practicable Means (BPM) Improvements and Innovations



Manufacturing and installing pre-cast wall panels to reduce potential noise impact when working close to neighbouring properties.



Use of noise reducing acoustic barriers for certain works when required at perimeter



Use of lightweight modular slab falsework system with minimal components that can be erected and dismantled by hand reducing dependency on power tools.



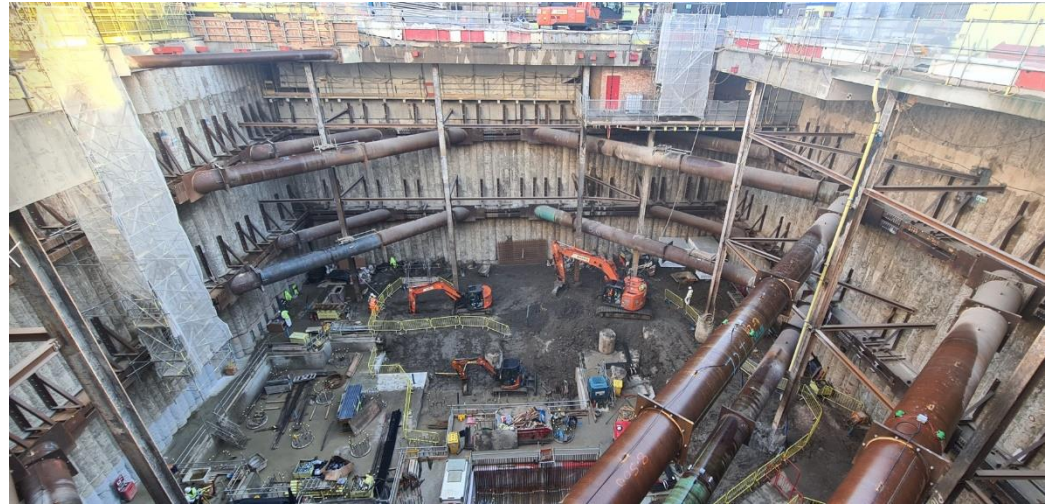
1 MAYFAIR

LONDON

Best Practicable Means (BPM) Improvements and Innovations



Use of acoustically enclosed cutting stations for pipework – reducing potential noise emittance



Basement area in Zone 2 designed to allow the work area to be enclosed on all sides to shroud the works and reduce potential noise emittance from site.



1 MAYFAIR
LONDON



South Audley Street Temporary Pedestrian Crossing



Introduced in September 2022

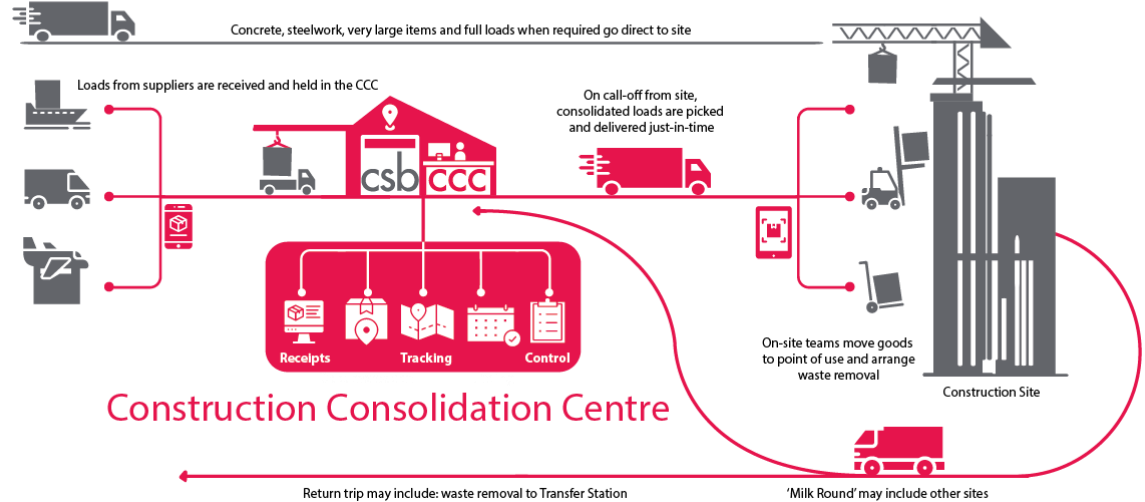


Logistics and Traffic Management

Construction Consolidation Centre

Using an off-site consolidation centre for Just In Time (JIT) deliveries to site has the potential to offer the following advantages;

- Up to 70% reduction in freight traffic to site.
- Reduced carbon emissions and traffic congestion.
- Noise and pollution reductions.
- A potential 6% productivity gain based on increased workforce productivity of 30 minutes per day.
- A 7-15% reduction in waste.
- More efficient utilisation of delivery vehicles.





Sustainability and Environment

GREEN INITIATIVES

WINT (Water Intelligence) system

- Detects and stops leaks at the source using artificial intelligence
- Sends alerts when water is leaking and automatically turns it off
- Real-time monitoring identifies sources of leaks and waste preventing damage, reducing consumption by up to 25% and cutting the resulting carbon emissions

Clean tech

- Use of hybrid and electric plant on site in place of diesel where possible
- Reduces fuel use and carbon emissions





Sustainability and Environment

GREEN INITIATIVES

Reducing single use plastic

- Focus on eliminating, reducing, and trialling alternatives to plastics
- Discussing options with subcontractors to reduce plastic packaging
- Investigating the use of protec – initiative to responsibly remove and recycle Proplex plastic temporary protection sheets



PROTEC
TEMPORARY PROTECTION
PROTECTING OUR WORLD

WI blockwork

- Alternative method of structural support using hollow blocks
- Up to 23.6% carbon reduction potential as less concrete required

Caudwell Children

CHANGING CHILDREN'S LIVES



caudwell
children

Changing Children's Lives

RCN 1079770
SC 043874



A national charity, with a local heart.

Caudwell Children 21 Years Changing Lives

40,000
children and families

£60million
worth of services

650
different medical conditions

We act as a safety net for families who are unable to gain the help they need by providing...



Who are Caudwell Children...

- Founded by John Caudwell in 2000, run by Chief Executive, Trudi Beswick from the start
- **TRANSPARENT** – 100% of direct donations go to help the children and families we support
- **EFFICIENT** – deliver over £2.14 worth of services for every £1 donated
- **NEED LED** – services have been developed based on what families have told us
- **NATIONAL CHARITY, LOCAL HEART** – operating in communities all over the UK, we pride ourselves on dealing with children as individuals
- **INNOVATIVE** – constantly striving to improve ourselves and the services we offer to families